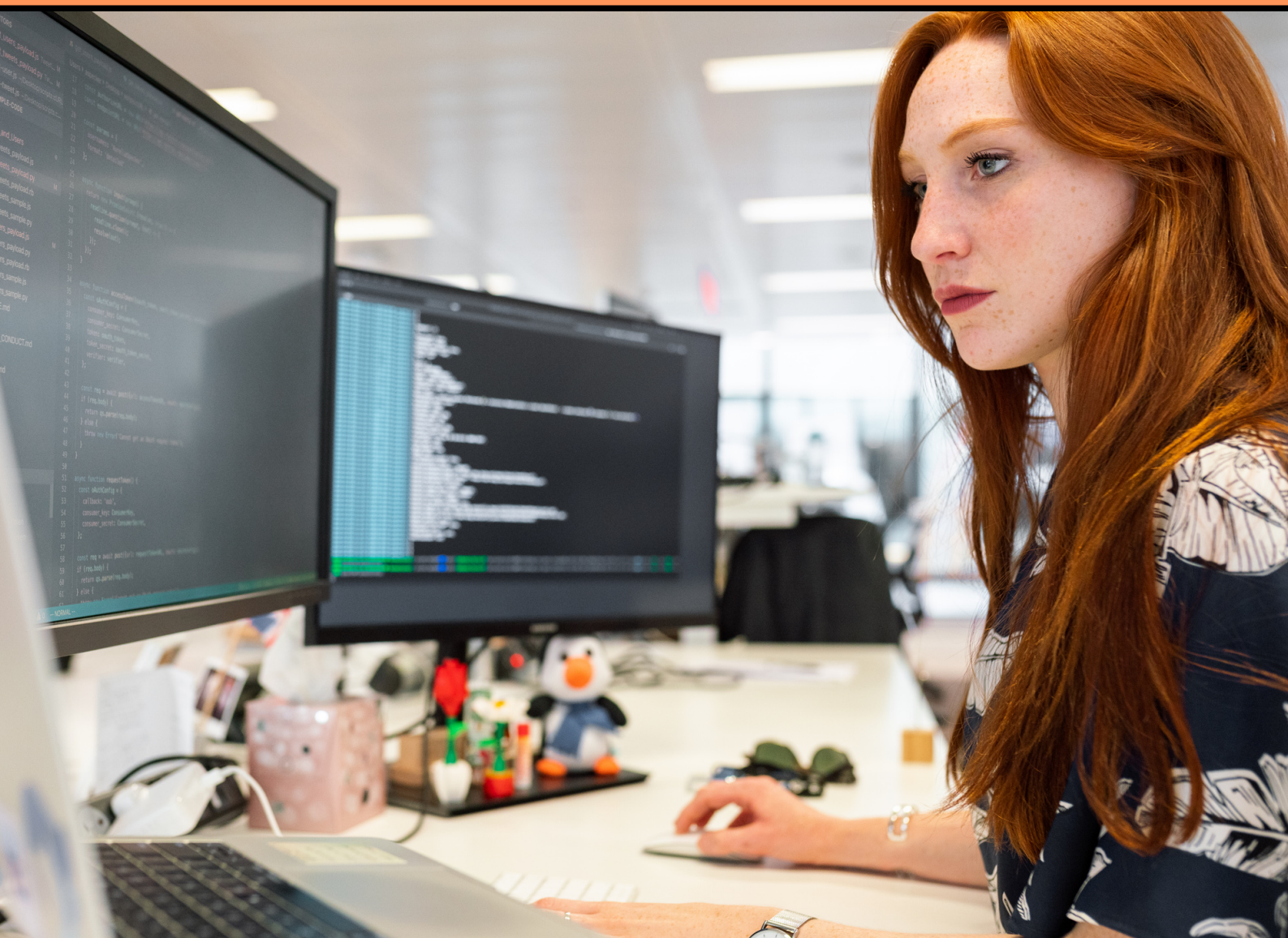


Research Ireland Centre's for Research Training in Artificial Intelligence

 Taighde Éireann
Research Ireland

PhD Information
Pack

2024/2025



Centre's for Research Training in Artificial Intelligence

Welcome

Big Welcome to the SFI Centre for
Research Training in Artificial
Intelligence.

In order to help you on your new journey,
we have put together this short
practical guide designed with you in
mind.

HOST INSTITUTION



PARTNER INSTITUTIONS



First, the programme is coordinated by the Leadership Team and is managed locally by each institution (host site) associated to this programme.

They are :

University College Cork

Trinity College Dublin, Dublin City

University, The University of Limerick

and The University of Galway.



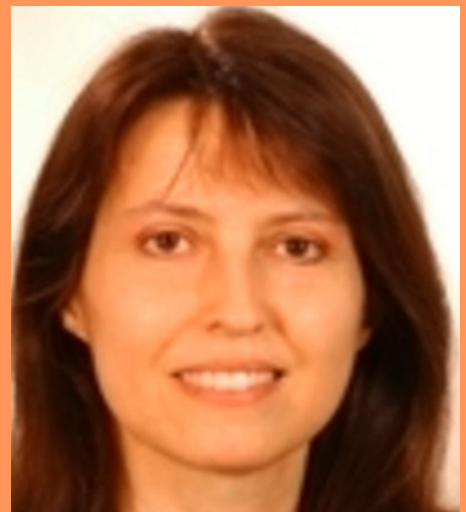
HOST INSTITUTION



PARTNER INSTITUTIONS



This Research Ireland funded programme is coordinated by the leadership team



Top Row: Centre Director Professor Barry O'Sullivan, Co-Director (DCU)
Dr. Suzanne Little, Co-Director (UCC) Dr. Derek Bridge

Bottom Row: Co-Director TCD) Dr. Ivana Dusparic , Co-Director (NUIG)
Dr. Paul Buitelaar, Co-Director (UL) Professor Tiziana Margaria

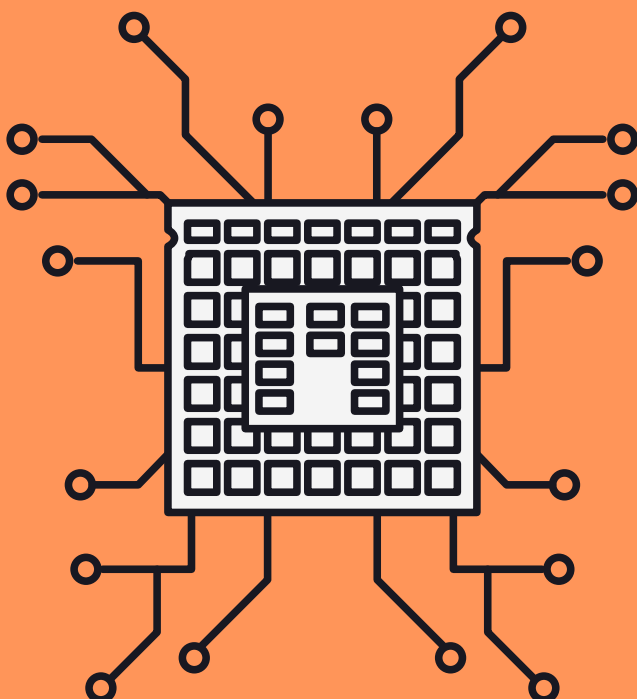
CRT in AI Training

Mandatory programme specific AI Methods module

The AI Methods training module:

- Duration: One week training courses x 5 Worth:
- 10 ECT credits
- Note: each week is delivered at each of the associated universities

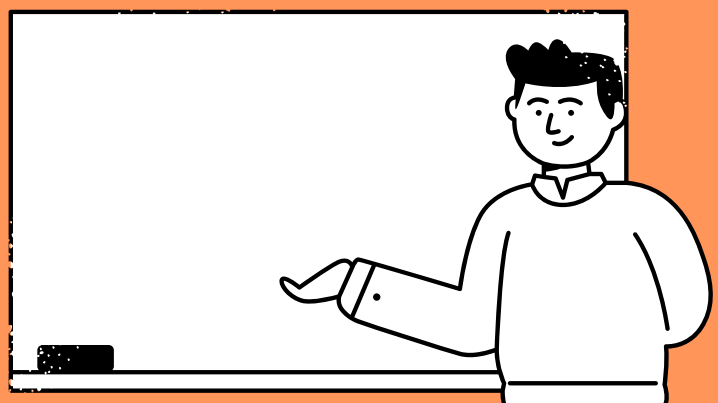
Each site helps to arrange travel arrangements in advance and is fully funded.



CRT in AI Training

Each host site runs a week long AI training module in year one of your PhD programme. You are expected to complete these 5 training weeks in succession.

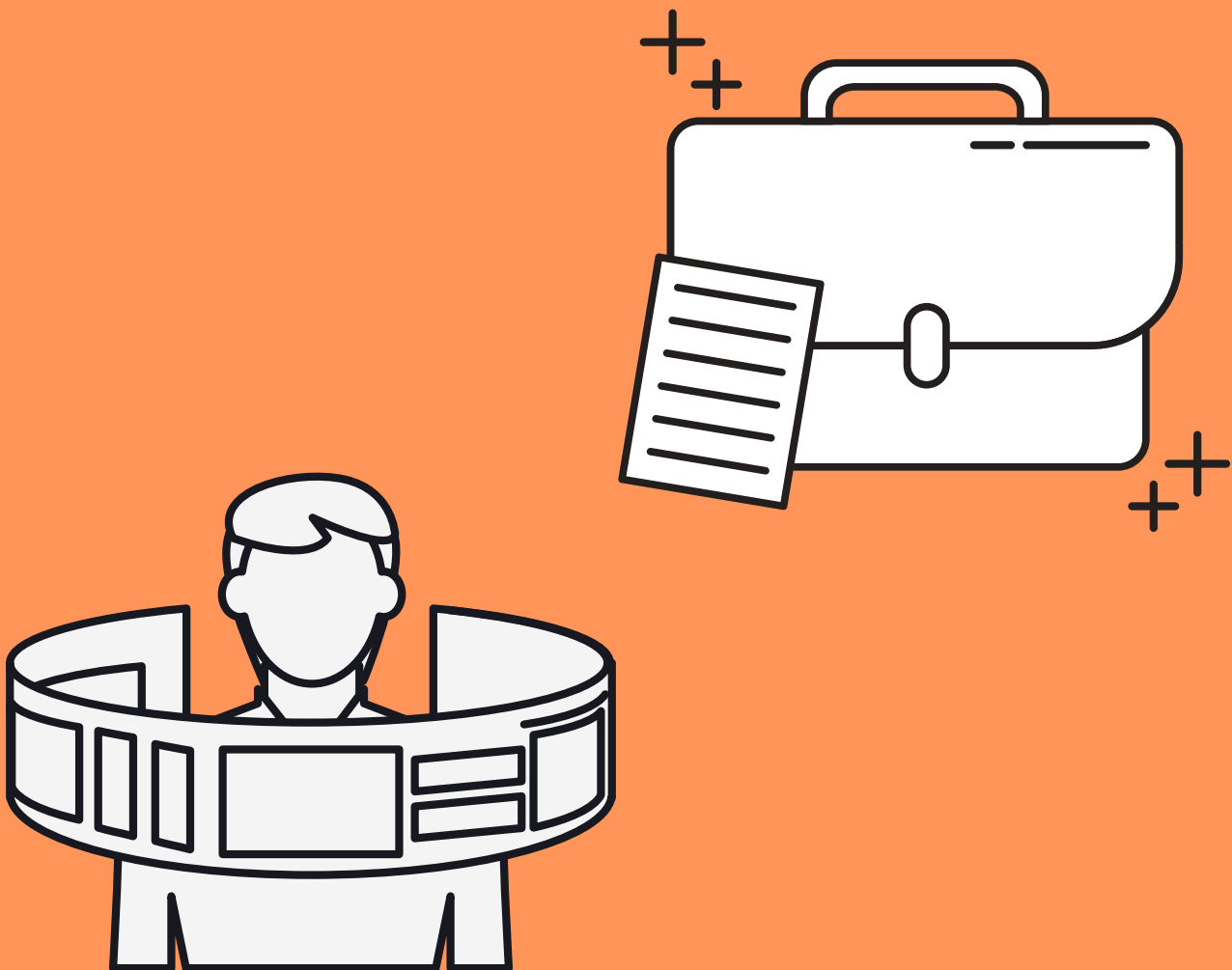
Research Integrity Training is also mandatory and will be required to be completed within the first 6 months after you start the programme.



CRT in AI Training

Mandatory Training Placement

As part of your PhD journey each student will complete a industry or academic placement for a minimum of three months at the end of Year Two or Year Three.



CRT in AI Training

CRT in AI Activities

Student Led Seminar Series

Annual: weekly from July to December

Meet the Researcher Initiative

Funded Conferences and other Scientific Events

Summer Schools

In Person Industry Field Trips

Future Skills Professional Showcase Event

European Site Visits - Cohort Builds

CRT in AI Training

CRT in AI Communications to promote events & activities

Information can be found:

CRT in AI website

CRT in AI newsletter :The Turing Point

CRT in AI Slack Platform

CRT in AI Twitter Page

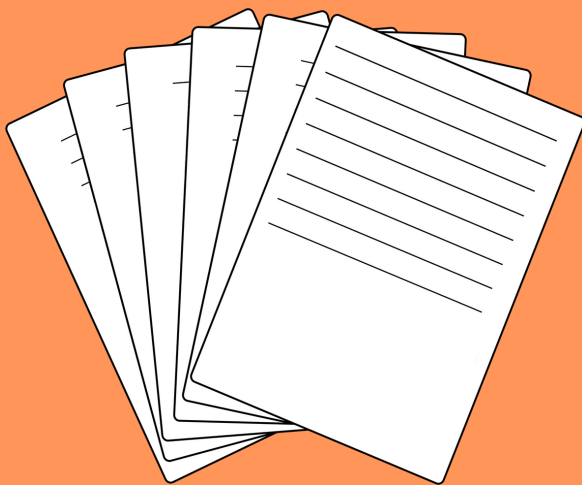
CRT in AI Media -YouTube Channel

CRT in AI LinkedIn

Your publications

What are publications?

These are the references that correspond to the products of your research: journal articles, communications in conferences, books, chapters in collective works... these publications are entered into your institutional database then appear on the website. Tell someone you've published! Inform the programme manager so that they can record it against your profile which in turn informs your funder of your achievements!



Publications Acknowledgements

Your funder will expect to be acknowledged when you present.

Papers: *This work was conducted with the financial support of Research Ireland Centre for Research Training in Artificial Intelligence under Grant No. 18/CRT/6223.*

This publication has emanated from research conducted with the financial support of Research Ireland under Grant number 18/CRT/6223 For the purpose of Open Access, the author has applied a CC BY public copyright license to any Author Accepted Manuscript version arising from this submission.

Presentations : *“This work was conducted with the financial support of Research Ireland Centre's for Research Training in Artificial Intelligence under Grant No. 18/CRT/6223.”*

Publications Acknowledgements

Where possible and permissible Research Ireland wish for their logo to accompany published works. Research Ireland must always be spelled out in its entirety.



Open Access

Find out if your journal has an open access agreement with your institution.

IReL is the Irish Research eLibrary. It is a nationally funded online research library providing access to leading Science Technology and Medicine (STM) and Humanities and Social Sciences (HSS) resources to participating institutions.

<https://irel.ie/open-access/>

Presentation Format

The CRT in AI has a specific AO poster template and PowerPoint slides for your use.

These templates should be used in all scenarios when you are presenting and representing the CRT in AI.

Presentations, conferences, education and public engagement activities must be brought to the attention of the programme manager so that any impacts against your profile is up to date with the funder.

Institutional Repository

Your research publications shall be archived to your local institutional research repository. Your library will be a great resource to you and can help to archive your research work which will provide free open access to research publications and theses. Get in touch with them to set up an account.

UCC: <https://cora.ucc.ie/>

TCD: <http://www.tara.tcd.ie/>

DCU: <https://doras.dcu.ie/>

UL: <https://ulir.ul.ie/>

UG: <https://aran.library.nuigalway.ie/>

Visa Requirements

Some students will require a Visa to enter Ireland.

Here are some key resources to consult for nationals from outside of the European Economic Area.



Visa Requirements

You need a letter of acceptance from your local institution to apply for a visa.

You will need to apply for Irish residency permit (IRP)

New IRP card

From Tuesday 1 March 2022, a new version of the Irish Residence Permit (IRP) card is being introduced for all non-EEA nationals who are registered to live, work or study in Ireland.



Visa Requirements

Apply for IRP:

<https://www.irishimmigration.ie/registering-your-immigration-permission/information-on-registering/irish-residence-permit/>

Apply for a PPSN:

<https://www.gov.ie/en/service/12e6de-get-a-personal-public-service-pps-number/>

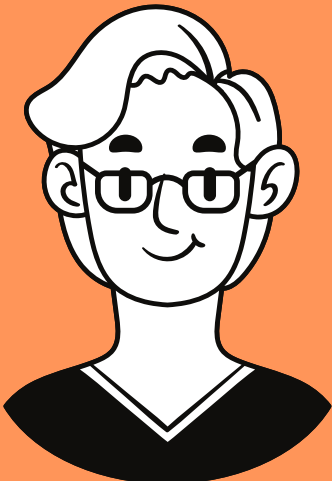
Note: you will need your institutional acceptance letter for the activities above



Create your profile

As a PhD in the cohort, you will be asked for your bio-profile and picture for the centre's industry brochure and the CRT in AI website.

Send this along to your PM when you have it ready.



Participating in a conference or going to summer school?

Events such as these need to be planned out well. Your journey, including travel, accommodation, conference fees, visa fees must be clearly budgeted.

Therefore pre planning is advisable, and the costs for the activity requested.

You should ask if there is a formal procedure for this with your local institution - a form to complete

You must discuss with your supervisor and talk to your local co-director regarding your travel plans. There after the local administrative staff will assist you with your arrangements and advise.

To book you need authorisation and ask for quotes from your corporate travel agent Eg: Club Travel.

Local rules will apply in relation to thresholds for accommodation and subsistence. Check with your local finance office.

Booking train tickets, bus tickets see the listings in the last section of this document.

Equipment

You will need to discuss your computational requirements with your supervisor and work with the local administrator to plan for a sustainable and cost effective system for your research work.

Check List

All students must have the following:

- Letter of acceptance from the University;
- Have a Irish bank account;
- Irish PPS Number and provide this to payroll; Complete
- Research Integrity Certification course; Create your
- bio-profile;
- Obtain your institutional email;
- Find out when the five AI module begins;
- Obtain the CRT-AI slide Deck template and AO poster template;
- Understand how to acknowledge the funder;
- Understand how to archive your work in the local repository;
- Inform the PM about your research activities
- Understand the local travel policy and how it works.

Non EU students:

- Must possess a valid IRP
- Health Insurance

If you have any questions you can contact the CRT programm manager, local co-ordinator, your supervisor or co-director at anytime.

Site Specific Information

University College Cork

PhD Researchers

Mandatory Requirements

- Research Integrity Certification ([Epigeum](#))
- PhD Credits to Graduate (15 credits minimum of 90 possible credits)
- Training Placement (Internship)
- CRT in AI Training Module- 5 weeks in total completed in year one of PhD (CS7101)
- CS&IT PhDs must complete the following module: (PG6001 STEPS -Scientific Training for Enhanced Postgraduate Studies) you need to register with the module coordinator by emailing them directly.
- See [UCC Book of Modules](#) for course descriptors PG6001

[MyStudentPortal](#)

[Archiving your Publications](#) Boole Library

[Open Access](#)

[Canvas](#)

[Agresso](#)- Expense Claims

[Student Health & Wellbeing](#)

[Student Counselling](#)

[How to Apply for PPSN](#)

[Accommodation](#)

[How to make an appointment for IRP?](#)

[Health Insurance](#)

Site Specific Information

University of Limerick

PhD Researchers

Mandatory Requirements

- CS8013 DigitalResearchManagement TL8003
- PlanningResearch &Publication TL8013
- Developing Ideas &Arguments:Writingto AcademicCommunities
- CM8003 ResearchNetworking:Developingan AcademicProfile
- LA8013 ResearchEthics
- ES8002Research Integrity

Registration Information

MyStudentPortal

Expense ClaimsRegisterwith Agresso

Open Access

Student Health & Wellbeing

Student Counselling

Emergencies

Health Insurance

IRP and visa related information

Accomodation

Site Specific Information

University of Galway

PhD Researchers

Mandatory Requirements

- GS5110- ResearchIntegrity
- Epigeiumonline certificationin ResearchIntegrityis compulsory.You can also take the ResearchIntegrity moduleand receivecreditsfor it.
- CT 5151 - AI Methods:This is compulsoryfor CRT-AI (training weeks)

New Postgrad StudentRegistration

StudentPortal

ResearchIntegrity

ResearchIntegrity training is compulsoryfor CRT-AI. You can also take the ResearchIntegrity module and receive credits for it.

Along with academicrelatedmodules, you can also selectedGeneralSkills modules

Blackboard

Accomodation

Open Access

Site Specific Information

Trinity College Dublin

PhD Researchers

Mandatory Requirements

- CA7000:RESEARCHINTEGRITYAND IMPACT IAN
OPEN SCHOLARSHIPERA
- CS7039:ResearchMethods
- VP1017_PD:Teachingand SupportingLearning as a
GraduateTeachingAssistant
- Demonstrationhours (72)

StudentPortal Blackboard

Accommodation

ExpenseClaim (iExpense)

Site Specific Information

Dublin City University

Mandatory Requirements

- CA639 10 credit AI Methods Module (UCC call this CS7101)
- EE611 - Placement Module
- Total of 30 ECTS (which can include CA639 & EE611)
- Research Integrity
-

IT support:

Information System
Services

Open Access DCU

Health Centre DCU

Welcome to your Future!

HOST INSTITUTION



PARTNER INSTITUTIONS

