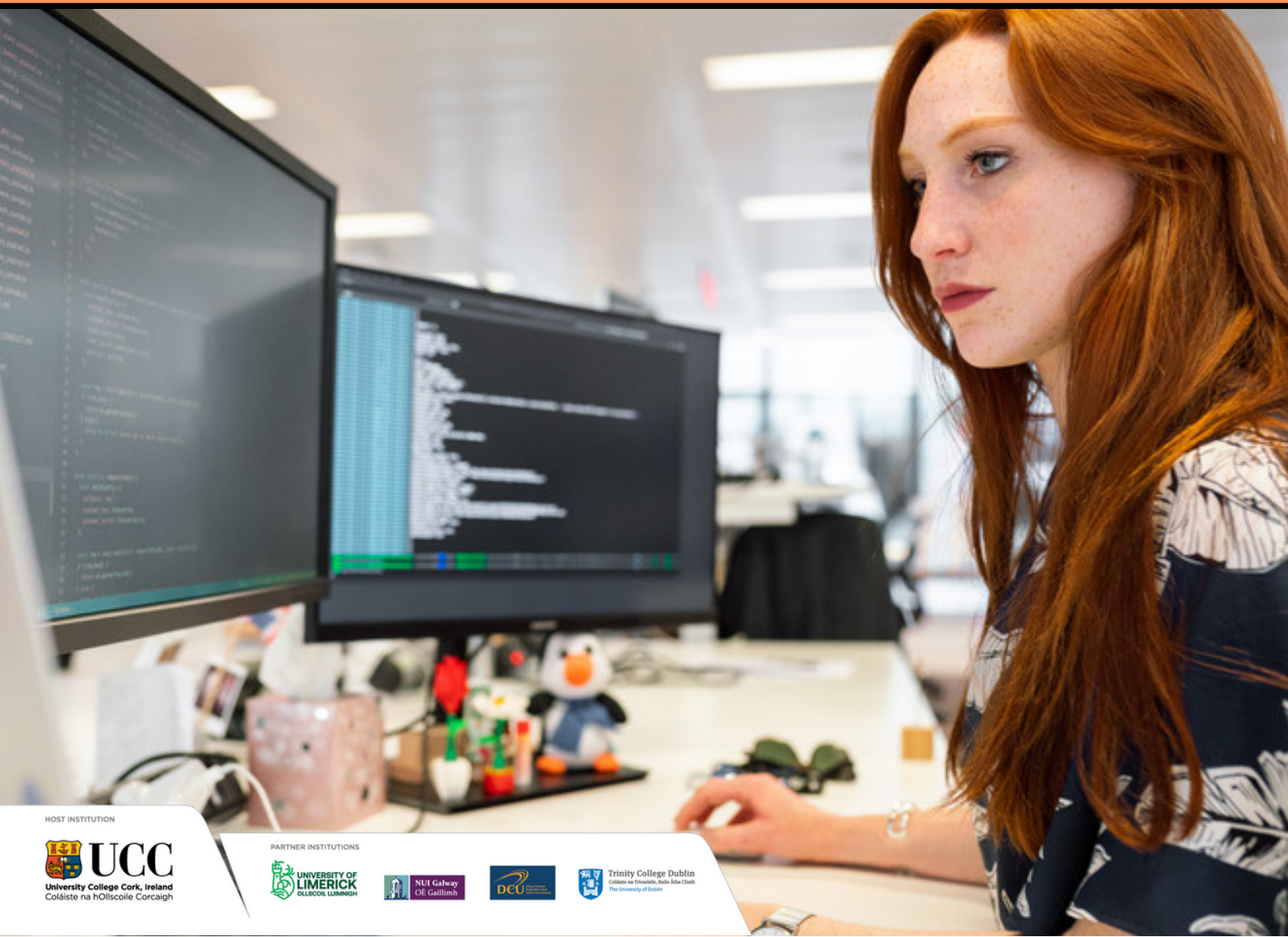


The SFI Centre for Research Training in Artificial Intelligence

PhD Information
Pack

2022/2023



HOST INSTITUTION



PARTNER INSTITUTIONS



The SFI Centre for Research Training in Artificial Intelligence



Welcome to the SFI Centre for Research
Training in Artificial Intelligence.
In order to help you on your new journey,
we have put together this short
practical guide designed with you in
mind.



HOST INSTITUTION



PARTNER INSTITUTIONS



The programme is coordinated by the Leadership Team and is managed locally by each institution (host site) associated to the Centre.

They are :

University College Cork

Trinity College Dublin, Dublin City

University, The University of Limerick
and University Galway.



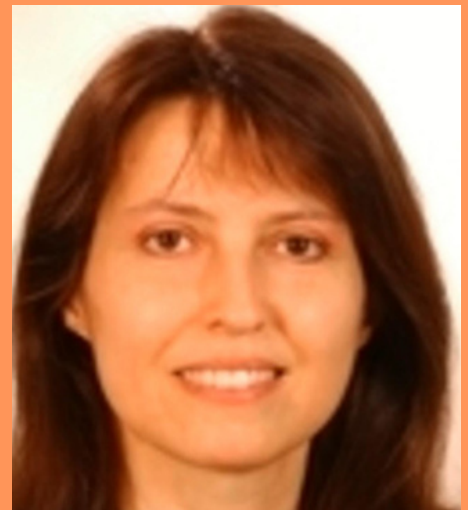
HOST INSTITUTION



PARTNER INSTITUTIONS



The programme is coordinated by the Leadership Team



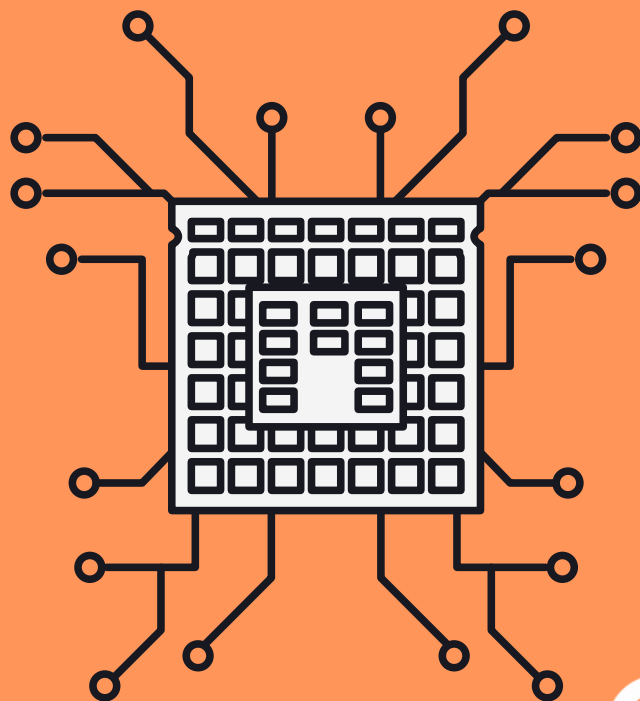
First Row: Centre Director Professor Barry O'Sullivan, Co-Director (DCU)
Dr. Suzanne Little, Co-Director (UCC) Dr. Derek Bridge

Second Row: Co-Director TCD) Dr. Ivana Dusparic , Co-Director (NUIG)
Dr. Paul Buitelaar, Co-Director (UL) Professor Tiziana Margaria

CRT in AI Training

The AI Methods module

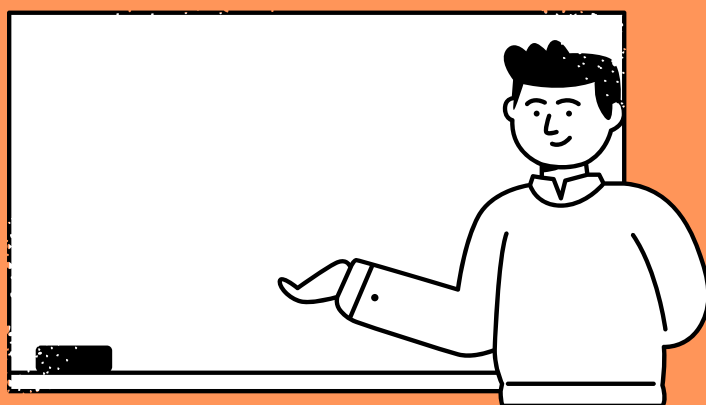
The AI Methods module is fully funded, which means that you will be reimbursed for the cost of your travel, accommodation and meals. Locally, each site helps to arrange travel arrangements in advance.



CRT in AI Training

Each host site runs a week long AI training module in year one of your PhD programme. You are expected to complete these 5 training weeks in succession.

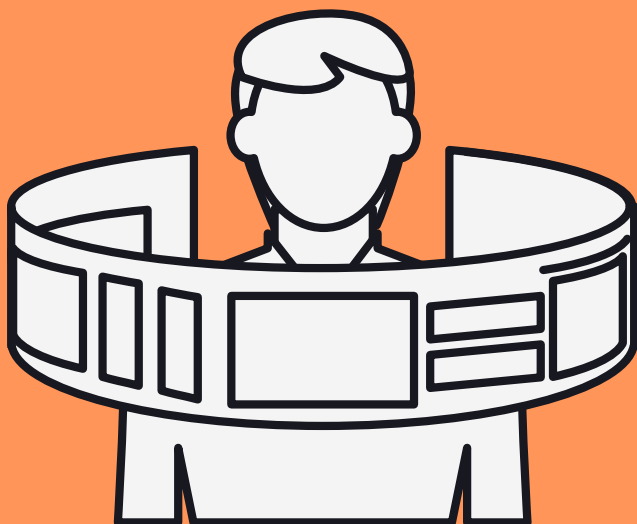
Research Integrity Training is also mandatory and will be required to be completed within the first 6 months after you start the programme.



CRT in AI Training

Training Placement

As part of your PhD journey each student will complete a placement for a minimum of three months at the end of Year Two or Year Three.



CRT in AI Activities

Student Led Seminar Series
Annual: weekly from July to December

Meet the Researcher Initiative
Monthly

Funded Conferences and other
Scientific Events

Summer Schools

In Person Industry Field Trips

CRT in AI Communications to promote activities.

Information can be found:

CRT in AI website

CRT in AI newsletter :The Turing Point

CRT in AI Slack Platform

CRT in AI Twitter Page

CRT in AI Media -YouTube Channel

CRT in AI LinkedIn

Your publications

What are publications?

These are the references that correspond to the products of your research: journal articles, communications in conferences, books, chapters in collective works... these publications are entered into your institutional database then appear on the website. Tell someone you've published! Inform the programme manager so that they can record it against your profile which in turn informs your funder of your achievements!



Publications Acknowledgements

Your funder will expect to be acknowledged when you present.

Papers: This work was conducted with the financial support of the Science Foundation Ireland Centre for Research Training in Artificial Intelligence under Grant No. 18/CRT/6223.

This publication has emanated from research conducted with the financial support of Science Foundation Ireland under Grant number 18/CRT/6223 For the purpose of Open Access, the author has applied a CC BY public copyright license to any Author Accepted Manuscript version arising from this submission.

Presentations : “This work was conducted with the financial support of the Science Foundation Ireland Centre for Research Training in Artificial Intelligence under Grant No. 18/CRT/6223.”



Publications Acknowledgements

Where possible and permissible Science Foundation Ireland wish for their logo to accompany published works. Science Foundation Ireland must always be spelled out in its entirety.



Find out if your journal has an open access agreement with your institution.

IReL is the Irish Research eLibrary. It is a nationally funded online research library providing access to leading Science Technology and Medicine (STM) and Humanities and Social Sciences (HSS) resources to participating institutions.

<https://irel.ie/open-access/>

Presentation Format

The CRT in AI has a specific AO poster template and PowerPoint slides for your use.

These templates should be used in all scenarios when you are presenting and representing the CRT in AI.

Presentations, conferences, education and public engagement activities must be brought to the attention of the programme manager so that any impacts against your profile is up to date with the funder.

Institutional Repository

Your research publications shall be archived to your local institutional research repository. Your library will be a great resource to you and can help to archive your research work which will provide free open access to research publications and theses. Get in touch with them to set up an account.

UCC: <https://cora.ucc.ie/>

TCD: <http://www.tara.tcd.ie/>

DCU: <https://doras.dcu.ie/>

UL: <https://ulir.ul.ie/>

UG: <https://aran.library.nuigalway.ie/>

Visa Requirements

Some students will require a Visa to enter Ireland.
Here are some key resources to consult for
nationals from outside of the European Economic
Area.





Visa Requirements

Apply for IRP:

<https://www.irishimmigration.ie/registering-your-immigration-permission/information-on-registering/irish-residence-permit/>

Apply for a PPSN:

<https://www.gov.ie/en/service/12e6de-get-a-personal-public-service-pps-number/>

Note: you will need your institutional acceptance letter for the activities above



Create your profile



As a PhD in the cohort, you will be asked for your bio-profile and picture for the centre's industry brochure and the CRT in AI website.

Send this along to your PM when you have it ready.



Participating in a conference or going to summer school?

Events such as these need to be planned out well. Your journey, including travel, accommodation, conference fees, visa fees must be clearly budgeted.

Therefore pre planning is advisable, and the costs for the activity requested.

You must discuss with your supervisor and talk to your local co-director regarding your travel plans.

There after the local administrative staff will assist you with your arrangements and advise.

To book you need authorisation and ask for quotes from your corporate travel agent Eg: ClubTravel.

Local rules will apply in relation to thresholds for accommodation and subsistence. Check with your local finance office.

Booking train tickets, bus tickets see the listings in the last section of this document.

Equipment

You will need to discuss your computational requirements with your supervisor and work with the local administrators to plan for a sustainable and cost effective system for your research work.

Check List

All students must have the following:

- Letter of acceptance from the University;
- Have a Irish bank account;
- Irish PPS Number and provide this to payroll;
- Complete Research Integrity Certification course;
- Create your bio-profile;
- Obtain your institutional email;
- Find out when the five AI module begins;
- Obtain the CRT-AI slide Deck template and AO poster template;
- Understand how to acknowledge the funder;
- Understand how to archive your work in the local repository;
- Inform the PM about your research activities
- Understand the local travel policy and how it works.

Non EU students:

- Must possess a valid IRP
- Health Insurance

If you have any questions you can contact the CRT programme manager, local co-ordinator, your supervisor or co-director at anytime.

HOST INSTITUTION

PARTNER INSTITUTIONS

Welcome to your Future!



SFI Centre for Research Training
in Artificial Intelligence

HOST INSTITUTION



PARTNER INSTITUTIONS

